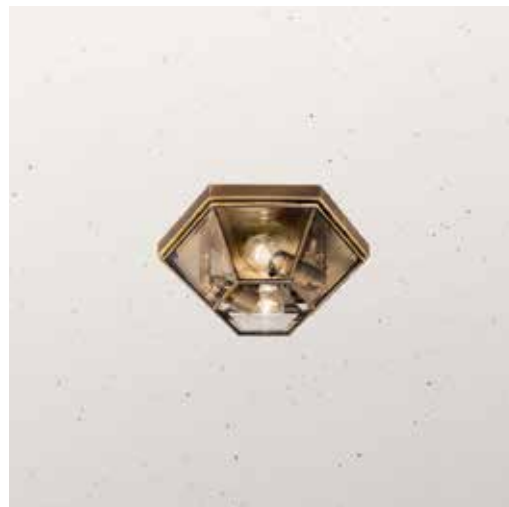


490.00.80


DT STUDIO

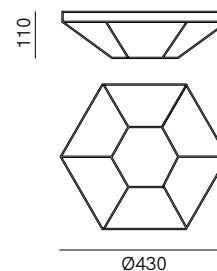
Ispirate all'antica tradizione della rilegatura, le lampade della collezione Rilegato simboleggiano la tradizione artigiana italiana pur essendo prodotti moderni dallo spirito internazionale. Lampade a sospensione, da soffitto o da parete interamente fatte a mano usando vetro bisellato e ottone, secondo il miglior know-how del made in Italy.

Inspired by the ancient tradition of bookbinding, the Rilegato collection represents traditional Italian craftsmanship while offering modern lamps with international flair. Pendant, ceiling lamps or wall lamps entirely handmade in bevelled glass and brass, according to the best made in Italy know-how.



SPECIFICHE TECNICHE | TECHNICAL DATA

Tipologia Type	soffitto ceiling
Ambiente Environment	indoor
Materiali Materials	Ottone - Vetro Brass - Glass
Fonte luminosa Light source	2 x Max 15W LED E27 (non inclusa not included)
Tensione Voltage	240 Vac 50-60 Hz
Dimmerazione Dimming	Taglio di fase IGBT / TRIAC Phase cut IGBT / TRIAC
Scatole Boxes	1
Volume totale Total volume	0,096 m ³
Peso lordo Gross weight	5 kg
Certificazioni Certifications	CE EAC  IP20



FINITURE | FINISHES

Montatura | Frame



Ottone Brunito
Burnished Brass

Vetro | Glass



Trasparente
Transparent